

Annual Report 2014-2015



UNIVERSITÉ
LAVAL



Table of Contents

Mission, Vision, Values **1**

A word from the Rector **2**

A word from the Chair of the Board of Directors **3**

Université Laval at a glance **4**

Financial report **6**

Honorary degree recipients **8**

Emeritus professors **9**

Board of Directors and University Council **10**

Management team **12**



L'Université Laval¹

Mission

The first institution of higher learning in America, open to the world and imbued with a culture of high standards, Université Laval contributes to the development of society

- By educating qualified and responsible individuals who become agents of change
- By seeking and sharing knowledge in a stimulating environment of research and creation

Values

The university community's actions are geared to bolstering student success and reflecting the following fundamental institutional values:

- Respect for the diversity of people, societies, knowledge, and ways of thinking
- Humanistic and ethical approach
- Development of critical thinking and judgment
- Personal and community involvement and leadership
- Promotion of creation, innovation, and excellence

Vision

The members of the university community share a stimulating common vision of the future: to become one of the best universities in the world. To that end, Université Laval also intends to stand out by being:

- A comprehensive university recognized as an establishment with an international reputation for its students and high quality educational programs
- A university on the cutting edge of research and creation that distinguishes itself on the national and international scenes through its exceptional achievements
- An open university that promotes dialog, cooperation, and the participation of its members in major world issues
- A university committed to its community that builds productive partnerships with all sectors of society while staying true to its fundamental mission, independence, and responsibilities
- A model university that gives all members of its community the opportunity to grow, develop their potential, and establish themselves in a dynamic, stimulating, diverse, and respectful institutional setting
- A modern university that is committed to sustainable development and manages its resources responsibly

¹ Horizon 2012 : Orientations de développement de l'Université Laval



A WORD from the Rector

I am privileged as rector of Université Laval to share in the projects, ideals, challenges, and objectives of a bold, creative community whose contributions to social progress in Quebec, Canada, and the world are inestimable. I take pride in this every day.

The 2014–2015 academic year gave us cause to celebrate once again at being part of one of Canada's great creative research universities. The training, research, and community-service activities our institution provides drew wide attention, and the University continued to be noted at home and abroad for its ability to meet current and emerging needs for training and new solutions in every field—from theology to art science, geomatics, forestry, agriculture and food, medicine, the social sciences, nursing, music, philosophy, administration, and education.

Université Laval would not be what it is today without all of those who are deeply committed to the university's development. We owe them an enormous debt of gratitude, and I thank them all from the bottom of my heart.

Denis BRIÈRE
Rector

Highlights in teaching...

- Five new programs of study
- Five new educational leadership chairs
- Establishment of the School of Nutrition (FSAA)
- Establishment of the first-ever MOOC in sustainable development: 5,700 enrolled
- Distance education: 60,000 enrolled, with 40% of students enrolled in at least one distance learning activity
- More than 880 students in international mobility programs

...and research

- Adoption of 2015–2020 Research Development Plan
- \$325 in research funding
- Ranked 6th among Canadian universities in research-creation
- Establishment of Alliance santé Québec
- Historic \$98 million grant to launch the Sentinel North project
- Implementation of Institut nordique du Québec
- Establishment of the Joint Research Unit in Urban Science (Unité mixte de recherche en sciences urbaines)
- Establishment of the ABL Innovation consortium
- Establishment of a social innovation fund (Fonds de soutien à l'innovation sociale)

A WORD from the Chairman of the Board



The 2014–2015 academic year ended with a remarkable feat—balancing the budget without sacrificing the quality of teaching or research in a time of government fiscal consolidation and a history of chronic underfunding throughout the Quebec university system. This achievement showcased our community's ability to deal with daunting financial challenges year after year without halting our forward momentum.

We can also give ourselves a pat on the back for the improvements made to our campus environment in recent years. The sound state of our property assets is now providing an \$11 million cushion each year in the budget. The more flexible treatment of certain capital expenses we now enjoy is the fruit of Université Laval's leadership and willingness to work with the government of Québec on long-term higher education funding solutions. It is currently paying off for the entire Québec university system. Our society's future depends on the many benefits deriving from university teaching and research.

This is a great source of pride for me, and on behalf of the board I congratulate the university community for its responsible and efficient management and outstanding achievements throughout the 2014–2015 academic year.

John R. PORTER
Chair

A year of sustainable development!

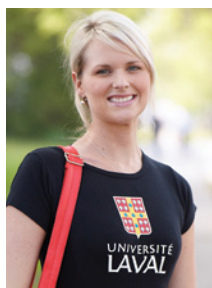
- January 2014: Université Laval receives gold-level STARS accreditation, ranking 1st in Canada and 9th worldwide
- Forêt Montmorency is enlarged (614 km²), making it a substantial carbon sink
- The 3rd sustainable development action plan is adopted
- Fall 2015: Université Laval becomes Québec's first carbon-neutral and Canada's first voluntarily carbon-neutral university

Building improvements:

- Renovation of the Pavillon Desjardins food and drink areas
- Renovation of the Cité universitaire theatre
- Reconfiguration of the campus's north entrance
- Twinning of traffic lanes on Avenue du Séminaire
- Conversion of Avenue des Sciences humaines into a pedestrian walkway
- Reconfiguration of La Fabrique building
- Continuation of upgrades to the Vachon, De Koninck, and Bonenfant buildings
- Complete sewer system overhaul
- Continuation of three-year telecommunications infrastructure renewal plan
- Construction and inauguration of new backup thermal power plant

L'UNIVERSITÉ LAVAL

at a glance



Our students¹

Our student population for the Fall 2015 term:

- Over 42,500 students
- 72% full-time students
- 25% in master's and PhD programs
- Some 5,600 permanent resident and international students—13% of the total student population and 27% of the student population at the graduate level
- Nearly 900 medical residents and 360 postdoctoral fellows

Over 230 student associations and two student unions: CADEUL, for undergraduate students, and AELIÉS, for graduate students.

With 900 students outside of Quebec annually on various mobility programs, Université Laval is a leader in student mobility.

Education

17 faculties

Over 60 departments, schools, and institutes

Some 500 programs of study² in all fields of knowledge

5 study profiles: Sustainable Development, Honours, Entrepreneurial,

International, and Research

22 chairs in educational leadership

Over 80 programs offered entirely through distance education and over 800 courses offered online. Over 40% of students take at least one online course

The ENA course portal, an innovative and user-friendly digital online environment, hosted nearly 5,000 course websites in 2014–2015.

Continuing education activities in Québec City, Montréal, and a number of other regions throughout Québec. Over 10,000 students enrolled in 2014–2015.

Université Laval's integrated health network, Réseau universitaire intégré de santé de l'Université Laval (RUIS-UL), serves 1.7 million people and provides ongoing professional training in the health sector for all of Eastern Québec.



Staff³

9,370 full- and part-time employees:

- 3,685 professors, lecturers, and other teaching and research staff
- 2,910 administrative and support staff
- 2,775 students and postdoctoral fellows

Université Laval also has nearly 600 associate professors, 775 clinical professors, and over 4,380 clinical instructors at its disposal.

Research⁴

\$325 million in research funds⁵, ranking us sixth out of the top 50 research universities in Canada.

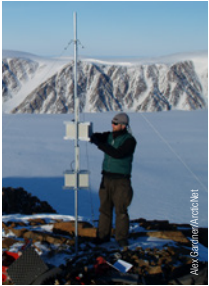
Over 270 research centres, chairs, institutions, and other research structures:

- 3 Canada Excellence Research Chairs
- 81 Canada Research Chairs
- 68 Partnership Research Chair
- 39 research centres recognized by the University Council
- Some 70 research groups, units, labs, and other structures

A number of affiliated research institutions, including Centre de recherche du CHU de Québec-Université Laval, North America's premier francophone health research centre.

Host of Institut nordique du Québec, which conducts research on major issues in sustainable development in Northern Québec. Also the founder of Alliance santé Québec, which brings together major players in health and social services research from the greater Québec City area.

Recipient, in 2015, of a \$98 million grant from the Canada First Research Excellence Fund—the single largest grant in the university's history and confirmation of UL's national and international leadership in Arctic science, optics/photonics, cardiometabolic health, and mental health.



Degrees awarded

11 740 diplômes et attestations de microprogramme décernés en 2014-2015⁶

- 5 234 baccalauréats
- 2 040 maîtrises
- 338 doctorats
- 1 833 certificats et diplômes de 1^{er} cycle
- 518 diplômes de 2^e cycle
- 1 777 attestations d'études de microprogrammes et autres sanctions.

Study, research, and living environment

Canada's first voluntarily carbon-neutral university as of 2015, Université Laval is a model living environment. The university received its gold STARS rating (Sustainability Tracking Assessment and Rating System) in 2014—further proof of its commitment to sustainable development. At the time of the assessment, Université Laval was ranked No. 1 in Canada and No. 9 in the world by STARS.

Université Laval's 1.8 km² campus, one of the finest in Québec, is home to extensive greenspace and wooded areas (64%).

The campus also boasts:

- Nearly 40 buildings linked by over 5 km of pedestrian tunnels
- One of Canada's most stunning and modern university sports complexes
- Student residences that are BGE eco-certified, with over 2,300 rooms

Université Laval has a number of other teaching and research sites, including Forêt Montmorency, the largest teaching and research forest in the world.

In November 2015, Entrepreneuriat Laval was recognized as the world's top university business accelerator, ahead of many business incubators at some of the world's most prestigious universities.⁷ Entrepreneuriat Laval is a partner of the Entrepreneurial Profile offered at Université Laval. This program, unique in Québec, provides students with a wide range of services and training, giving them the opportunity to plan, manage, and implement various types of projects related to their interests and field of study.

Impact

- Over 277,000 alumni around the world⁸
- 50 alumni clubs and five alumni networks on five continents
- Nearly \$26 million in donations from alumni, friends, businesses, and members of the academic community in 2014–2015 to support students and the development of teaching and research⁹
- Over 750 partnership agreements with 500 post-secondary institutions and other organizations in nearly 70 countries
- One of the best university sports programs in the country: 400 student athletes excelling in 14 Rouge et Or clubs known for their tradition of excellence



¹ Source : GDEU (MEES) et Bureau de planification et d'études institutionnelles

² Source : Bureau du secrétaire général

³ Source : Bureau de planification et d'études institutionnelles (en date du 15 octobre 2015)

⁴ Source : Vice-rectorat à la recherche et à la création

⁵ Source : Research Infosource 2015, revenus de recherche de l'année financière 2013-2014; http://www.researchinfosource.com/top50_univ.php

⁶ Source : Bureau du registraire

⁷ Source : UBI Global, organisme de recherche international basé à Stockholm en Suède et spécialisé dans l'analyse comparative d'incubateurs universitaires.

⁸ Source : Association des diplômés de l'Université Laval (en date du 1^{er} juillet 2015)

⁹ Source : Fondation de l'Université Laval

OPERATIONS

Year ended April 30, 2015 (in thousands of dollars)

	OPERATING FUND		RESTRICTED FUND	
	2015	2014	2015	2014
	K\$	K\$	K\$	K\$
REVENUES				
Tuition fees	106 142	100 221	–	–
Community services	10 182	11 770	11 100	10 031
External services	25 394	25 872	–	–
Net investment income	3 683	6 165	1 132	1 329
Student services and aide	25 228	23 361	9 788	9 758
Ancillary services	19 993	19 684	–	–
MESRS subsidy	415 080	429 306	10 087	9 146
Donations				
Fondation de l'Université Laval	281	140	13 787	9 837
Other organizations	–	–	–	–
Other subsidies and revenues	10 660	10 571	166 253	169 554
Amortization of deferred contributions related to capital assets	–	–	–	–
	616 643	627 090	212 147	209 655
EXPENSES				
Teaching and independent research	387 282	375 750	853	–
Community services	8 851	8 732	15 839	16 434
Research	12 140	13 381	177 273	174 247
Support services	128 933	137 982	2 415	2 912
Student services and aide	24 400	22 657	15 679	16 761
Ancillary services	13 970	13 775	–	–
Renovations and redevelopment	–	–	–	–
Interest on long-term debt	966	2 084	–	–
Employee future benefits	17 795	12 839	–	–
Amortization of intangible capital assets	–	–	–	–
Amortization of capital assets	–	–	–	–
Loss on disposal of capital assets	–	–	–	–
	594 337	587 200	212 059	210 354
Excess (deficiency) of revenues over expenses	22 306	39 890	88	(699)

CAPITAL ASSETS FUND		ENDEWMENT FUND		SUBSCRIPTION FUND		TOTAL	
2015	2014	2015	2014	2015	2014	2015	2014
K\$	K\$	K\$	K\$	K\$	K\$	K\$	K\$
—	—	—	—	—	—	106 142	100 221
—	—	—	—	—	—	21 282	21 801
1 518	610	—	—	—	—	26 912	26 482
25	25	3 587	4 035	882	895	9 309	12 449
—	—	—	—	—	—	35 016	33 119
—	—	—	—	—	—	19 993	19 684
54 602	52 140	—	—	—	—	479 769	490 592
—	—	—	—	—	—	14 068	9 977
2 952	258	872	660	—	—	3 824	918
1 271	4 343	—	—	—	—	178 184	184 468
5 164	(4 309)	—	—	—	—	5 164	(4 309)
65 532	53 067	4 459	4 695	882	895	899 663	895 402
—	—	—	—	—	—	388 135	375 750
—	—	—	—	—	—	24 690	25 166
—	—	—	—	—	—	189 413	187 628
—	—	343	2 941	70	62	131 761	143 897
—	—	—	—	—	—	40 079	39 418
—	—	—	—	—	—	13 970	13 775
2 302	1 421	—	—	—	—	2 302	1 421
22 463	22 700	—	—	—	—	23 429	24 784
—	—	—	—	—	—	17 795	12 839
53	53	—	—	—	—	53	53
59 967	62 023	—	—	—	—	59 967	62 023
—	1 144	—	—	—	—	—	1 144
84 785	87 341	343	2 941	70	62	891 594	887 898
19 253	34 274	4 116	1 754	812	833	8 069	7 504

HONORS

Recipients in 2014-2015 (delivered between June 1, 2014 and May 31, 2015)

Honorary Doctorate Recipients



FATHER JEAN-MARC BOULÉ
(1939-2013)
Capuchin and former rector
of the Séminaire Saint-François
Honorary doctor



HONOURABLE ROMÉO A. DALLAIRE
Retired senator
and humanitarian
Honorary doctor



DENIS FOREST
Professor emeritus
of dentistry and oral medicine,
Faculty of Dentistry
of Laval University
Honorary doctor of Dentistry



ELISABETH GIDENGIL
Canadian political scientist
Honorary doctor
of Political Sciences



PATRICIA SCOTT GRIFFIN
Professor emerita at Social Justice
Education Program,
University of Massachusetts
Honorary doctor
of Education Sciences



ÓLAFUR RAGNAR GRÍMSSON
President of Iceland
Honorary doctor



ANDRÉ LAURIN
Pioneer and defender
of consumer rights
Honorary doctor
of Consumer Sciences



FRED PELLERIN
Singer, songwriter,
performer and writer
Honorary doctor of Letters



ANDRÉ PERRY
Producer, musician, composer,
recording engineer
Honorary doctor of Music



ANDRÉ PRÜM
Dean of the Faculty of Law,
Economics and Finance
of the University of Luxembourg
Honorary doctor of Law



ANDRÉS FELIX WEINTRAUB
Professor, Department of Industrial
Engineering, University of Chile
and director of the Institute
for Complex Engineering Systems
Honorary doctor of Science



Emeritus Professors



MICHEL BEAUDOIN
Faculty of Forestry,
Geography and Geomatics



**JEAN-THOMAS
BERNARD**
Faculty of Social Sciences



AURÉLIEN BOVIN
Faculty of Arts
and Human Sciences



RAYMOND BRODEUR
Faculty of Theology
and Religious Studies



CLAUDE COSSETTE
Faculty of Arts
and Human Sciences



ANDRÉE FORTIN
Faculty of Science
and Engineering



JACQUES LAPOINTE
Faculty of Science
and Engineering



ALAIN MARTEL
Faculty of Business
Administration



MARC PELCHAT
Faculty of Theology
and Religious Studies



MARIUS THÉRIAULT
Faculty of Planning,
Architecture, Arts and Design

BOARD

of Directors and University Council

as at May 31 2015

Board of Directors

VOTING MEMBERS

Section 71 of By-Laws

RECTOR

Denis BRIÈRE*

EXECUTIVE VICE RECTOR, DEVELOPMENT

Éric BAUCE*

DEAN

André DARVEAU*

PROFESSORS

Jacques BERGERON*

Daniel COULOMBE

Doris PELLERIN

LECTURER

Patrice PUMA FREYTAG

GRADUATE STUDENT

Christian DJOKO KAMGAIN

UNDERGRADUATE STUDENTS

Geoffroy BOUCHER

David BILODEAU*

DEPARTEMENT MANAGER

Loubna GHAOUTI*

PROFESSIONAL STAFF MEMBER

Luc SIMON

SUPPORT STAFF MEMBER

Luc BROUILLETTE

GRADUATE APPOINTED BY UNIVERSITÉ

LAVAL ALUMNI ASSOCIATION

François BÉLANGER

INDIVIDUAL APPOINTED BY UNIVERSITÉ LAVAL FOUNDATION

Vacant

INDIVIDUALS APPOINTED BY BOARD OF DIRECTORS

John R. PORTER, président

Marthe LACROIX

Natalie QUIRION*

Barbara POIRIER*

Edwin BOURGET

Louise TURGEON

Claude TESSIER

INDIVIDUALS APPOINTED BY THE GOVERNMENT

Marina BINOTTO

Sylvie DILLARD

Vacant

NON-VOTING MEMBERS

Section 72 of By-Laws

VICE RECTORS

Bernard GARNIER*

Sophie D'AMOURS*

Michel BEAUCHAMP*

Josée GERMAIN*

SECRETARY GENERAL

Monique RICHER*

University Council

VOTING MEMBERS

Section 90 of By-Laws

RECTOR

Denis BRIÈRE

VICE RECTORS

Éric BAUCE

Bernard GARNIER

Sophie D'AMOURS

Michel BEAUCHAMP

Josée GERMAIN

SECRETARY GENERAL

Monique RICHER

DEANS

Alain ROCHON

(Planning, Architecture, Art and Design)

Eugénie BROUILLET

(Law)

Robert BEAUREGARD

(Forestry, Geography and Geomatics)

Michel DE WAELE

(Arts and Human Sciences)

Rénauld BERGERON

(Medicine)

André FOURNIER

(Dentistry)

Robert ROUSSEAU

(Music)

Jean LEFEBVRE

(Pharmacy)

Victor THIBAudeau

(Philosophy)

Michel GENDRON

(Business Administration)

Jean-Claude DUFOUR

(Agriculture and Food Sciences)

* Also member of the Executive Committee

Fernand GERVAIS
(Education)

André DARVEAU
(Science and Engineering)

Clémence DALLAIRE
(Nursing)

Jacques MATHIEU
(Social Sciences)

Gilles ROUTHIER
(Theology and Religious Studies)

DEAN OF THE GRADUATE STUDIES
Marie AUDETTE

PROFESSORS
Planning, Architecture, Art and Design
André POTVIN

Law
Frédéric LÉVESQUE

Forestry, Geography and Geomatics
Berthier BEAULIEU

Arts and Human Sciences
Florence PIRON
Vacant

Medicine
Claire HUDON
François BERTHOD
Bradford James MCFADYEN
Michel VINCENT
Denis COULOMBE

Nursing
Nancy LEBLANC

Business Administration
André CÔTÉ
Benny RIGAUX-BRICMONT

Agriculture and Food Sciences
Sylvie TURGEON
Robert LAGACÉ

Education
Simon LAROSE
Frédéric GUAY

Science and Engineering
Denis BOUDREAU
Nadia TAWBI
Thierry OLLEVIER
Bruno GAILLET

Social Sciences
Charles MORIN
Francine SAILLANT
Vacant

Theology and Religious Studies
Robert MAGER

LECTURERS
Louise NÉRON
Robert J. GRACE

RESEARCH PROFESSIONNAL
Rachel LÉPINE

UNDERGRADUATE STUDENTS
Marie-Ève FRADETTE
Maude CLOUTIER
Valérie DESHAYE
Thierry BOUCHARD-VINCENT

GRADUATE STUDENTS
Christian DJOKO KAMGAIN
Stéphane LEBRUN
Alain KABEYA KALONJI
Sébastien LACROIX

PROFESSIONAL STAFF MEMBER
Guy LABRECQUE

SUPPORT STAFF MEMBER
Mario DUCLOS

COLLEGE LEVEL REPRESENTATIVE
Isabelle FORTIER

OUTSIDE RESEARCH REPRESENTATIVE
Vacant

DIRECTOR OF RECOGNIZED RESEARCH CENTERS OR INSTITUTES
Réal VALLÉE
Denis RICHARD

DEPARTMENT MANAGER OR MEMBER OF MANAGERIAL STAFF
Richard BUTEAU

NON-VOTING MEMBERS
Section 91 of By-Laws

COMMITTEE CHAIRS

Academic Committee
Claude SAVARD

Research Committee
Pascal DALEAU

Students Affairs Committee
Éric PHILIPPE

DIRECTOR GENERAL OF UNDERGRADUATE STUDIES
Serge TALBOT

DIRECTOR GENERAL OF CONTINUING EDUCATION
Vincent GOULET

DIRECTOR OF AN INSTITUTE
Institut québécois des hautes études internationales
Louis BÉLANGER

MANAGEMENT Team

As at september, 2014



Front row

Sophie D'AMOURS
Vice Rector, Research
and Creation

Denis BRIÈRE
Rector

Éric BAUCE
Executive Vice Rector,
Development

Second row (left to right):

René LACROIX
Deputy Executive Vice Rector,
Information Systems

Michel BEAUCHAMP
Vice Rector, Human Resources

Monique RICHER
Secretary General

François POTHIER
Deputy Vice Rector, formation quality
and success support

Josée GERMAIN
Vice Rector, Administration
and Finance

GUY ALLARD
Deputy Vice Rector,
Human Resources

Nicole LACASSE
Deputy Vice Rector, Academic
International Activities

Denis MAYRAND
Deputy Vice Rector,
Research and Creation

Mireille LÉTOURNEAU
Deputy Vice Rector,
Human Resources

Bernard GARNIER
Vice Rector, Academic
International Activities

Project management and writing: Office of the Rector

Collaborators: Finance Department, Institutional Studies and Planning Office, Communication Department

Graphic design and layout: Service de reprographie

Photos: Faculty of Forestry geography and Geomatics, Faculty of Medicine,
Yan Doublet (Rouge et Or), Marc Robitaille, Stéphane Groleau, Alex Gardner (ArcticNet), Université Laval

Photo search: Communication Department

Published by: Office of the Rector

www.ulaval.ca



